



Owners Manual

1165



Thank You for Purchasing a Split-Fire Log Splitter!

We appreciate having you as our customer and wish you many years of safe and satisfactory operation with your machine.

SPLIT-FIRE SALES INC.

285633 Airport Road
Norwich, ON N0J 1P0
Canada

1-877-548-3473 / 519-468-3647



Please share a google review about your
Split-Fire experience

Table of Contents

1. Introduction	4
1.1 How to use your Owner's Manual	4
1.2 Product Identification	6
1.3 Warranty	8
2. Safety	9
2.1 Safety Labels	9
2.2 Wood Handling Safety	12
2.3 Operation Safety	13
2.4 Worksite Safety	16
2.5 Option Safety / Operation	18
2.51 Four Way Knife	18
2.52 Wheel Kit	18
3. Operating Instructions	19
3.1 Before Operation	19
3.2 Operation	22
3.3 After Operation	23
4. Maintenance	24
4.1 Engine Maintenance	24
4.2 Log Splitter Maintenance	24
4.21 Hydraulic System	24
5. Storing you Splitter	27
7. Parts Breakdown	29
8. Manual Checklist	31

1.1 How to use your Owner's Manual

This owner's manual is a very important part of your new machine and should remain a permanent part of it. If the machine is sold, the operator's manual must go with it.

By reading the operator's manual you will help yourself and others avoid unnecessary personal injury and/or damage to the machine and will also allow you to perform maintenance to keep your machine operating properly. The information recorded in this manual will help you use this machine safely and effectively. Once you know how to operate the machine correctly and safely, you can train others to operate the machine as well.

If your machine has been ordered with any options or attachments, please refer to the option safety section of the individual operator's manual that is included with that specific accessory.

The machine that is used in this manual for illustration may differ slightly from your model. It will be similar enough to help you understand our instructions.

Throughout this manual the terms "Left Hand" and "Right Hand" will be used. These sides are determined when standing beside the splitter and facing the valve of the machine. Also "Back" and "Front" will be used. On the log splitter, the "Back" is referred to the manual cannister side and the valve is on the "Front". The hydraulic valve would be located on the front-right corner of the machine.

Your machine has been tested and inspected to pass quality control at Split-Fire's Manufacturing facility to ensure good performance prior to leaving the factory.

While reading the manual, important messages are used to bring the operator's attention where there may be safety concerns relating to machine damage and important servicing information. Please read all these messages to avoid personal injury and machine damage. The three main messages will start with:

WARNING!!!: which suggests, a strong chance of personal injury or death to the operator or bystanders if procedures are ignored.

IMPORTANT: which suggests, a strong chance of potential damage to the machine may occur if procedures are ignored.

NOTE: suggests to the operator, General information given to help the operator to operate or service the machine.

1.2 Product Identification

If you ever need to contact your dealer or the manufacturer for parts or questions regarding the operation or servicing of the machine, it is important to have the model number as well as all the necessary identification numbers. Using the sample pictures on page 7 you can find the necessary numbers to complete the spaces below.

Date of Purchase:

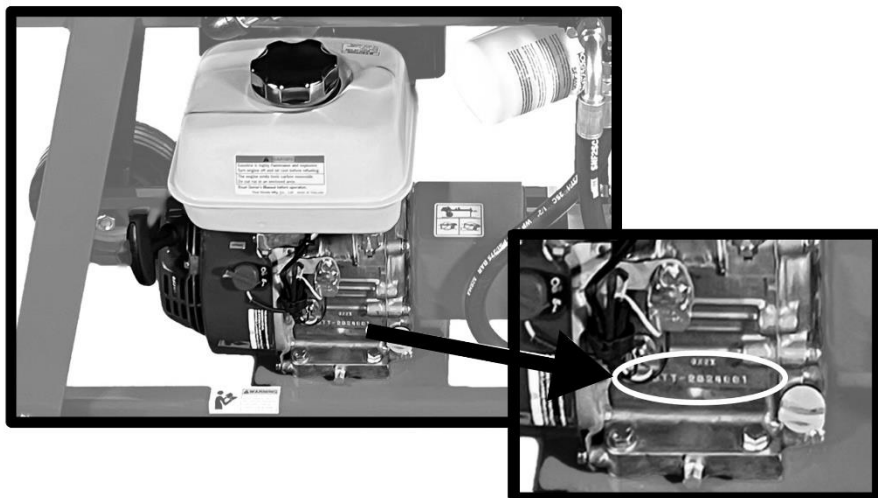
Dealer Name:

Dealer Phone Number:

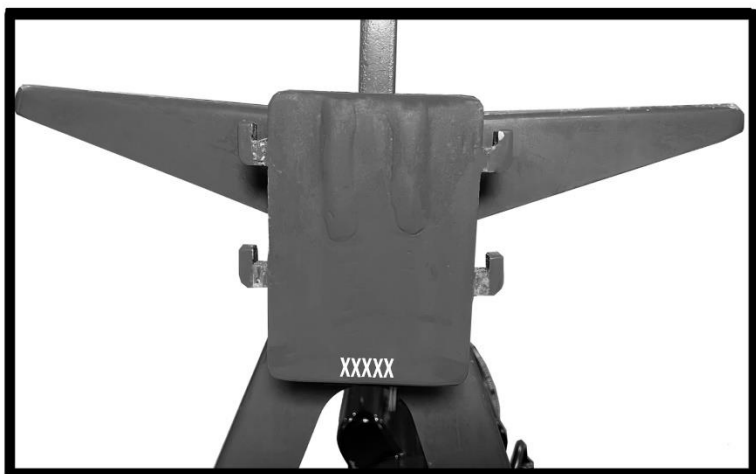
Frame Serial Number: (XX X XX)

Engine Serial Number (If equipped with engine): (XXXXXXXX)

Engine Serial Number



Frame Serial Number



1.3 Warranty

Split-Fire Sales Inc. guarantees the original purchaser of any new Split-Fire machine, that the same is free of defects in workmanship or materials that may cause performance failure, subject to the conditions hereafter.

Split-Fire must be contacted before the problem on the machine has been fixed. Split-Fire will diagnose the problem and authorize any warranty work that will be allowed. If Split-Fire does not authorize or parts are not sent from Split-Fire, warranty will not be applicable.

This guarantee is limited to a period of one year from the date of purchase. Replacement of any defective part is free of charge FOB Split-Fire Sales Inc. If Split-Fire requires the parts to be returned to Split-Fire, Split-Fire will pay for return shipping.

This guarantee does not apply to engines or other parts that are manufactured and guaranteed by the manufacturer thereof, nor does this apply with respect to any part or product that:

1. has original parts removed or otherwise altered without specific authorization beforehand from Split-Fire Sales Inc.
2. has had placed upon or attached to it, any part or product not sold or approved by Split-Fire Sales Inc.
3. has been damaged or is not used in conformity with the applicable instruction for the machine.
4. has not been properly adjusted or maintained by the owner.
5. has been adjusted or altered to increase the performance of the machine.

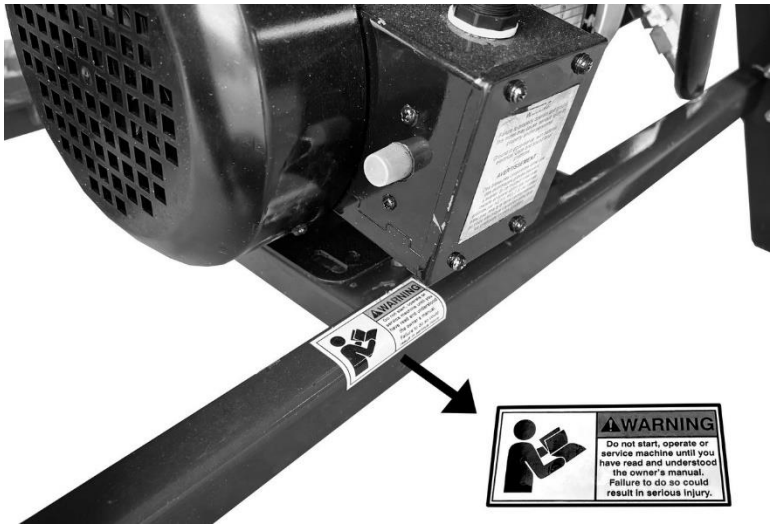
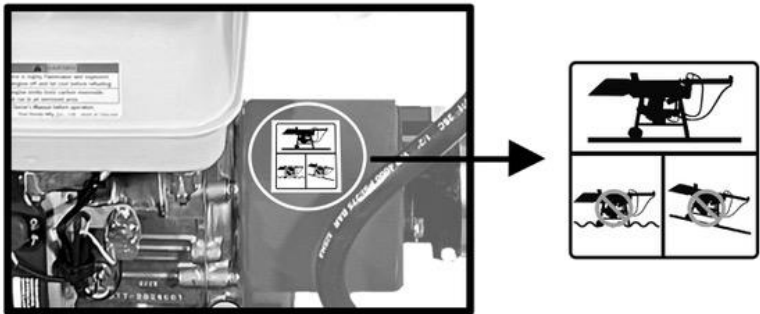
This guarantee is in lieu of, and excluded all other guarantees and conditions of merchantability and fitness for a purpose. Acceptance of a Split-Fire Sales product constitutes an agreement that Split-Fire Sales shall have no liability for any special or consequential damage.

2.1 Safety Labels

The machine safety labels shown in the section below are very important. They are placed in areas on the machine that draw the attention of the operator to potential safety hazards on the machine. If at any time the stickers are removed, or come off, contact your dealer or the manufacturer immediately for replacement decals.

The operator's manual explains the potential safety hazards in detail associated to each decal. Special attention should be kept for these recommendations. They are outlined for your safety.







2.2 Wood Handling Safety

WARNING!!! - NEVER HANDLE WOOD ON THE SAWN ENDS; BLOCKS SHOULD ALWAYS BE HELD BY THE BARK SIDES! HANDLING BLOCKS ON THE SAWN END INCREASES RISK FOR PERSONNEL INJURY

WARNING!!! - NEVER LIFT HEAVY/OVERSIZED LOGS BY YOURSELF. BAD POSTURE AND HEAVY LOGS MAY CAUSE SERIOUS INJURY. IF THE LOG IS TOO HEAVY GET ASSISTANCE.



It is important to always wear proper PPE when operating your log splitter.

Gloves – Gloves must be worn at all times to reduce the risk of slivers, imbedded objects (Nails, Wire, etc) and contact with natural poisons, (Poison Ivy, Poison Oak)

Eye Protection – Eye protection must be worn to reduce the risk of eye injury from airborne objects.

Foot Protection – Foot Protection must always be worn to reduce the risk of foot injury from falling logs. When splitting, logs may slip when being lifted, or may fall off the splitting bed.

Hearing Protection – Hearing protection must be worn to reduce the risk of hearing loss. Engines are loud enough to cause risk of hearing loss when exposed over a long period of time.

2.3 Operation Safety

✓ Carefully read and understand all the instructions pertaining to the log splitter in the operator's manual before operating your new machine. Anyone who operates or services this machine must read the owner's manual first. If any doubt or question arises about the safe and/or correct method of performing anything in this manual, contact one of our representatives at our head-office.

✓ Avoid accidents by being alert and recognizing potential hazards. Not all possible circumstances can be anticipated in this manual. Keep your log splitter and work area safe for yourself and others. Proper care and safety is your responsibility.

NOTE: If your log splitter is equipped with a Honda engine or any other attachments, be sure to read those manuals.

Warning:

The engine exhaust from this product contains chemicals known to the State of California to cause cancer, birth defects and other reproductive harm.

✓ All operators must have the necessary training and skills to operate the machine properly and safely. Use the controls correctly and follow the safety signs and recommendations.

✗ Never allow untrained persons to operate or service the equipment.

✗ Never let persons under the age of 18 operate the log splitter.

Safety

- ✓ The owner is responsible for accidents and injuries to themselves and/or other persons operating their machine. If others are permitted to use this machine it is the responsibility of the owner to train users.
- ✓ New users may operate this machine in a clear, unobstructed area under the supervision of an experienced operator, only after they have read and understand the owner's manual.
- ✓ Only allow responsible adults who are familiar with the instructions to operate this machine.
- ✓ Inspect your machine each time before use. Special attention should be taken that all guards are in place, damaged or missing parts are replaced, and that all the safety decals highlighted in the safety labels section are in place on the machine.
- ✓ Each time you operate your log splitter, ensure that the handle on the hydraulic valve returns to reverse position. Move handle both ways and if it sticks, immediately call the dealer or manufacturer for replacement parts.
- ✓ Only one person may operate the machine at any time. More than one operator greatly increases the chance of personal injury or death.
- ✗ Never leave machine unattended while running.
- ✗ Never operate machine when under the influence of alcohol or drugs.
- ✗ Do not alter; add accessories, or attachments to your log splitter without the approval of the manufacturer. Doing any of the above without the manufacturer's approval WILL VOID THE WARRANTY. If attachments have been added with the approval of the manufacturer, be sure to keep safety labels visible.

- ✓ Your machine is designed to split wood only! Stones, metal, brush, gravel, and other foreign objects will cause damage to the machine and increase the chance of personal injury or death.
- ✗ It is not recommended to split wood across the grain. This may cause wood to explode out sideways and cause personal injury or death.
- ✓ Operate your machine in a smooth manner. Do Not jam the control handles back and forth in a uncontrolled motion. Always maintain control and operate the controls at an even steady pace.

Safety

2.4 Worksite Safety

✓ Keep area around the log splitter clear from tall grass, debris, tools, and wood chunks/bark at all times.

✓ Operate log splitter on level surface only.



✗ Do not operate your machine in enclosed areas. Your engine produces Carbon monoxide, which is extremely dangerous if used in enclosed area. (E.g. Garage, Workshop, Barn)

✗ Do not operate machine when distracted by others. Keep children and pets at least 25 feet away from the work area to protect them from possible injuries. Keep other distractions such as radio, television etc. away.

✓ Only use machine during daylight hours. Use of this machine without proper lighting can lead to personal injury or death.

✓ Protect yourself at all times while operating your machine. Safety glasses, Hand Protection, Steel-toed boots and Ear Protection must be worn at all times. Loose clothing is also not permitted around your machine.



✓ Keep hands and body parts clear of cutting blade and pusher at all times.

✗ Never handle wood on the sawn ends; blocks should always be carried by the bark sides.



✘ Hands should not be lower than halfway down the sides of the block when splitting. If hands are lower and a log falls, fingers may get pinched between the log and the shelves.

✘ Do not transport this machine while the motor is running. This may cause permanent damage to your engine.

✓ Always disconnect the spark plug when the log splitter is not in use or is being serviced.

2.5 Option Safety / Operation

2.51 4-Way Knife

The four-way knife option is a great way to split smaller logs quickly into firewood size.

4-Way Knife Safety

- Do NOT Split logs that exceed 10" diameter when using the 4-Way Knife.
- Always ensure knife pin is in place before splitting wood.

2.52 Wheel Kit

The wheel kit add-on is a great option that allows the user to move the splitter more easily to position it in an ideal work location. If installation is not completed by a Split-Fire technician, follow installation manual associated with the option.

Wheel Kit Safety

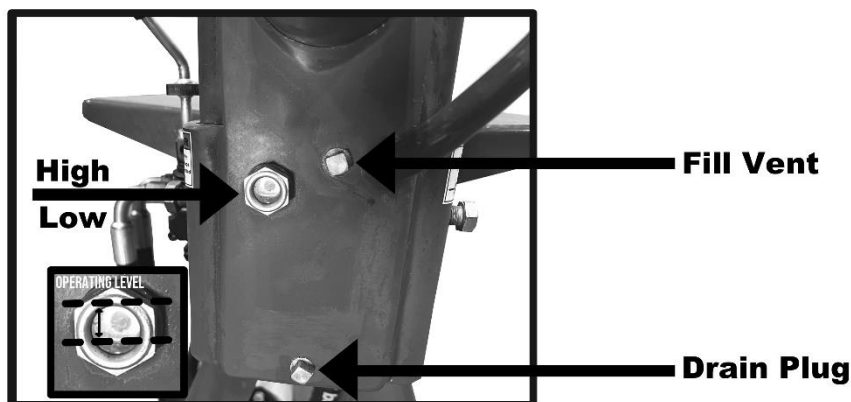
- Do NOT exceed 10 km/h when using wheel kit.
- Do NOT load extra material on the log splitter. It is not a trailer.

3. Operation

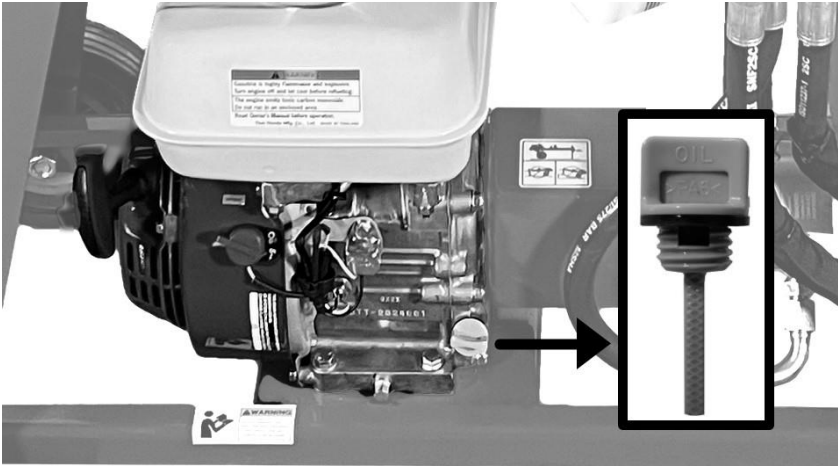
3.1 Before Operation

Before operating your machine, inspect it to ensure it is in good working order.

1. It is important that you have read and understood all safety recommendations before operating the Log Splitter. Read both the Log Splitter and Engine owners manual before operating the machine.
2. Verify the hydraulic oil level is at the correct level on the oil sight glass. The oil level must be between the top and half level of the sight glass.



3. Verify the engine oil level is at the correct level on the oil dip stick. The oil level must be sitting between the indication grooves



4. Ensure that the two cylinder-mounting bolts, and log tray bolt are securely in place. The bolts for the cylinder and log tray can be secured using the included wrench, tighten the cylinder to approx. 40 ft-lbs, or approx. 50 lbs of force on the included wrench.
5. Ensure that the knife pin is securely in place, if the knife does not come through the knife box far enough to insert the pin, remove the knife and clear any debris from the knife box. Splitting without the pin in place could cause damage to the splitter frame or the knife.
6. Be sure that the knife is free of burrs and dents. This can occur from splitting logs with embedded steel material. If the material has burrs or is dented, sand the knife to remove the dents and burrs.
7. Check for any hydraulic leaks around the hydraulic valve, cylinder, filter and pump. If there are any leaks replace the faulty parts or reseal leaky fittings.

8. Verify that the log splitter is on level ground and the work area is clean and organized.
9. Once the “before operation inspection” has been completed, the Log Splitter is ready for operation.

3.2 Operation

Once the “before operation checklist” has been completed, operation can begin:

1. The engine can be started. It is important to verify that the ON/OFF switch is in the ON position, the fuel is turned ON, as well as placing the choke in the ON position. (If the motor is warm the choke may not be needed.) Refer to the owners manual associated with the engine for specifics.
2. Once the engine has been started, allow the engine to warm up for 2-5 mins. Not only does it warm up the engine, it also warms up the hydraulic oil as it cycles the hydraulics.
3. While the Log Splitter is warming up, PPE can be put on (Ear, Eye, Foot, Hand protection is important for safety).
4. After the Log Splitter has warmed up, and PPE has been put on, the engine can be revved to half or full throttle. The machine does not need to operate at full throttle. Noise and fuel reduction can be achieved by lowering engine RPM's while only slightly lowering productivity.

Once splitting has been completed, follow the following steps:

1. The pusher must be cycled to the fully retracted position. This protects the cylinder rod from damage and corrosion, as well as displacing more oil into the reservoir for easier and more stable movement using the optional wheel kit
2. The engine RPM can be lowered to an idle. Allow motor to idle for 15-30 seconds before turning off.
3. Turn off engine by switching ON/OFF switch to the OFF position.

3.3 After Operation

After splitting, steps can be completed to keep your machine in good operating status.

1. Once the Log Splitter has cooled off, the machine needs to be cleaned. It is important to clean inside the knife box as well as the cylinder mounting pockets to remove wood debris. This can be most effectively done with air pressure via a blower, or a water pressure washer. A garden hose will also clean the frame.
2. Give the log splitter a quick visual inspection. Check for loose fasteners, oil leaks, etc., and repair where needed.

If any unnecessary noise occurs stop operation immediately and check for damage. If nothing can be seen, contact a dealer to book an inspection. If there are no dealers in your area, contact Split-Fire Sales Inc.

4. Maintenance

Maintaining your machine is important and will ensure that the machine lasts year after year offering smooth and reliable operation.

4.1 Engine Maintenance

Read the engine specific owners manual associated with your log splitter. General engine maintenance includes some but not limited to the following;

- Oil Changes
- Air Filter Changes
- Spark Plug Changes
- Cleaning of Fuel System

When refueling your engine, it is important to refuel with high test fuel (Not E85). Small engines will start easier, operate smoother, and will last longer with high test fuel. High test fuel also lasts longer before decomposing, and any fuel that sits longer than 4 weeks is recommended to have fuel conditioner added for stability.

4.2 Log Splitter Maintenance

4.21 Hydraulic system

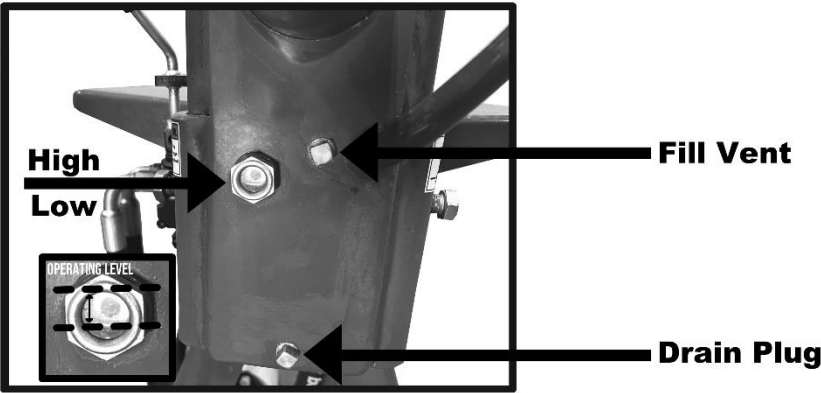
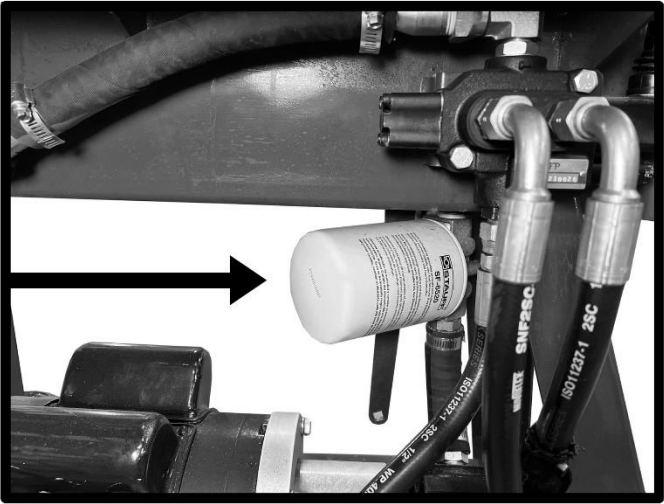
Oil Type - AW 32 Hydraulic Oil (Anti Foam agent formula if available)

Oil Capacity - 9.5 Liters (2.5 Gal) (Dry system)

8 Liters (2.1 Gal) (When cylinder full, Normal oil capacity during regular oil change)

Oil Change Frequency - First 50 hours from new production
150 hours regular intervals

Oil Filter Type - Spin-On Hydraulic Oil filter (10 Micron Min). Change Oil Filter with every oil change.



Oil Fill Level – Oil Level sight glass, must be between the top and half level of the sight glass. When filling be sure to remove fill vent fitting from reservoir using the included wrench.

Oil Drain - Oil reservoir must be drained using the drain plug fitting. Remove fitting using the included wrench. Drain hydraulic fluid into waste oil pan for a clean work area.

5. Storage

When storing your log splitter special attention should be drawn to the areas listed below.

1-4 weeks storage

1. Clean your machine as listed in the “after operation” section.
2. Turn OFF the fuel control on the engine
3. Add fuel stabilizer to maintain fuel quality
4. Store Log Splitter in a dry, clean, and secure area.

It is not uncommon for Split-Fire Log Splitters to be stolen due to their value. Always store the machine in a secure area!!

5 + weeks storage

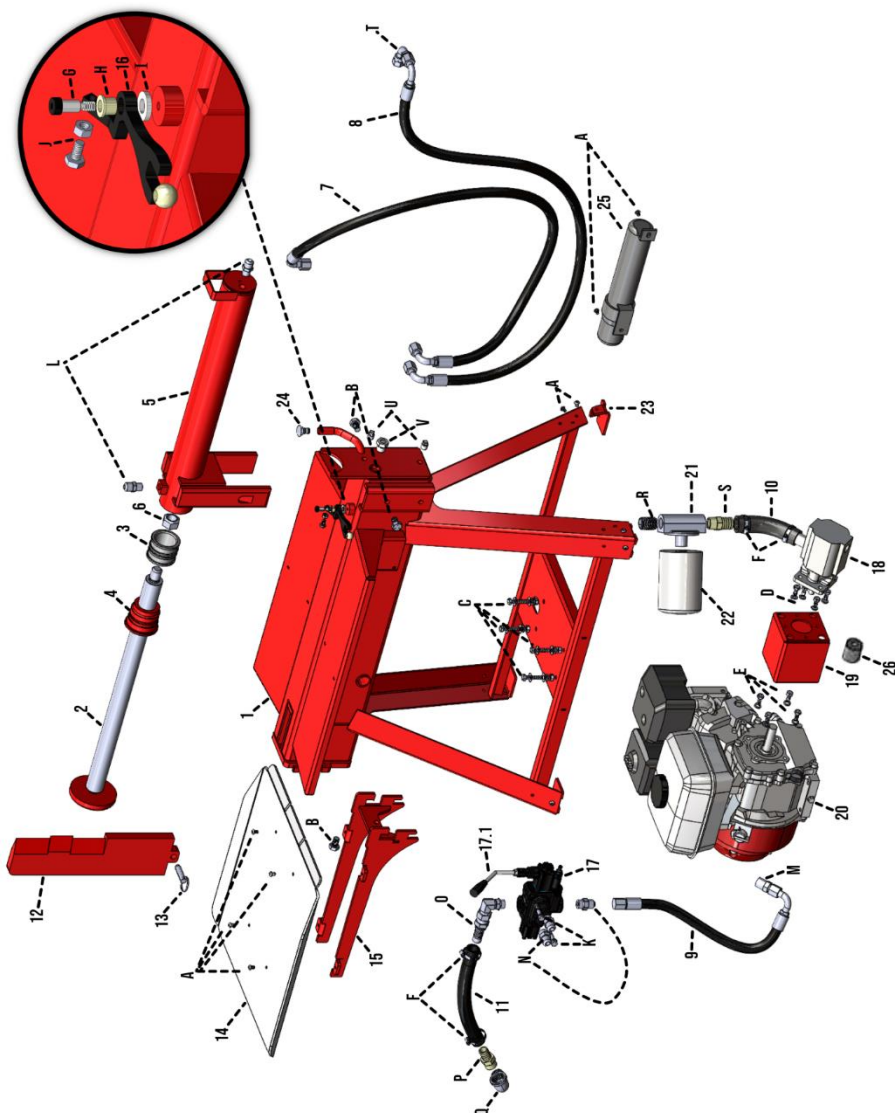
1. Clean your machine as listed in the “after operation” section.
2. Place the knife closest to the back of the machine. (This places the chrome cylinder rod in the cylinder and keeps it from getting dusty / rusty over long periods of time.
3. Add fuel stabilizer to maintain fuel quality and run engine for 5 minutes to fill carburetor with stabilized fuel.
4. Turn OFF the fuel control on the engine
5. Spray a light oil mist on paint-less areas such as the knife, stops and splitting bed, and inside the frame. This will prevent surface rust. (This oil must be washed off with a biodegradable solvent when the machine is placed back into service)
6. Store Log Splitter in a dry, clean, and secure area. If the machine is stored outside, tightly wrap the machine in a tarp to reduce moisture, and UV ray exposure.

It is not uncommon for Split-Fire Log Splitters to be stolen due to their value. Always store the machine in a secure area!!

How to collapse splitter for storage

1. Ensure that cylinder is fully retracted, and engine is turned off.
2. Loosen cylinder mounting bolts and log tray mounting bolt using included wrench, ensuring that bolts are unthreaded far enough to allow the cylinder and tray to be removed.
3. Remove tray by lifting upwards then simply flip the tray and lay it face down on the bed of the splitter as shown below
4. Remove the cylinder standing on the front side of the splitter and rotate it around counter clockwise and replace the stanchions into the pockets with the cylinder now in the machine backwards, carefully slide it down ensuring that the fitting wraps around the log tray spar as shown below.
5. The Splitter can now be stored in a small space or transported more easily.
6. Simply reverse the above steps to expand the splitter for splitting. When placing cylinder into the mounting pockets push the valve handle into the forward position before sliding cylinder all the way into the pockets. Ensure all mounting bolts are torqued to spec (pg.20) and the knife pin is securely in place.

PARTS BREAKDOWN



Item	Part #	Description	
1	SLP-1120-FSC	1165 Frame/Reservoir Assembly	16
2	SLC-1020-CR	1165 Cylinder Rod	17
3	SLC-1020-CP	1165 Cylinder Piston	17.1
4	SLC-1020-CG	1165 Cylinder Gland	18.1
5	SLC-1020-CB	1165 Cylinder Barrel	18.2
6	SLC-1020-CN	1165 Cylinder Rod Nut	19.1
7	SLP-1165-RL	1165 Retract Line	19.2
8	SLP-1165-EL	1165 Extend Line	19.3
9	SLP-1165-PV	1165 Pump-to-Valve Line	20.1
10	SLP-1165-FH	1165 Oil Feed Hose	20.2
11	SLP-1165-RH	1165 Oil Return Hose	20.3
12	SLP-1165-KN	1165 One-way Knife	21
13	SLP-1165-KP	1165 1/2" Knife Pin	22
14	SLP-1165-LTT	1165 Aluminum Log Tray Top	23
15	SLP-1165-LTS	1165 Steel Log Tray Spar	24
			25
			26

A	SLF-1438-BH	1/4-20 X 3/8 Button Head Bolt	L	SLP-F3812NJ	3/8" NPT to 1/2" JIC
B	SLF-1234-HF	1/2-20 X 3/4" Hex Head Bolt	M	SLP-F1212NJ	1/2" NPT to 1/2" JIC
C	SLF-5612-EB	5/16-18 X 1-1/2" Hex Head Bolt W/ 2 Washer, 1 Lock Washer, 1 Nut	N	SLP-F812OJ	-8 ORB to 1/2" JIC
D	SLF-5634-PB	5/16-18 X 3/4" Hex Head Bolt W/ Lock Washer	O	SLP-F834OB	-8 ORB to 3/4" Hose barb 90° Fitting
E	SLF-5634-CB	5/16-24 X 3/4" Hex Head Bolt W/ Lock Washer	P	SLP-F3434NB	3/4 NPT to 3/4" Hose Barb Fitting
F	SLF-112-HC	1" Hose Clamp	Q	SLP-F3434NN	3/4 NPT Street Elbow
G	SLF-5612-SB	5/16" X 1/2" Shoulder Bolt	R	SLP-F34CNN	3/4" X Close NPT
H	SLF-5638-FB	5/16" ID X 3/8" Brass Flange Bushing	S	SLP-F341NB	3/4"NPT to 1" Hose Barb
I	SLF-5618-TW	5/16" ID X 1" OD X 1/8" Delrin Thrust Washer	T	SLP-F1212J	1/2" JIC Street Elbow Hi-Flow
J	SLF-1434-AB	1/4-20X3/4" Bolt W/ Nut	U	SLP-F14NP	1/4" NPT Drain/Vent Plug
K	SLF-562-VB	5/16-18 X 2" Bolt W/ Lock Washer	V	SLP-F80SG	-8 ORB Sight Glass

Checklist**8. Manual Checklist**

1. Each person that operates this Split-fire log splitter must read and understand this checklist and the rest of the owner's manual before operation.
2. Handle wood on the bark side only. Never pick up or handle logs by the sawn ends. Handling logs by the sawn ends may result in injury and/or death.
3. Keep hands at least 6 inches away from the stops and the knife at all times.
4. Always wear ear, eye, hand, and foot protection when operating the log splitter. Never wear loose clothing.
5. Do not tamper with engine RPM or pressure settings as the oil may overheat and cause leakage. This may result in reduced splitting power and could cause damage to the log splitter.
6. Keep the working area around the log splitter organized and free of equipment, tools, wood, and debris. Not doing so could result in injury or death.
7. Do not lift logs that are beyond your lifting capability. To reduce strain and/or injury, flip up the log splitter stand and lower the hitch to the ground. Roll the log onto the log splitter using the lower corner of the shelf as a lever.
8. Take frequent breaks when using the log splitter. Stress and fatigue can result in injury and/or death. Be awake and alert at all times.

I have read and fully understand all of the above.

Customer/Operator Signature: _____

Date: _____ / _____ / 20____

